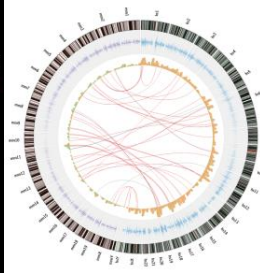
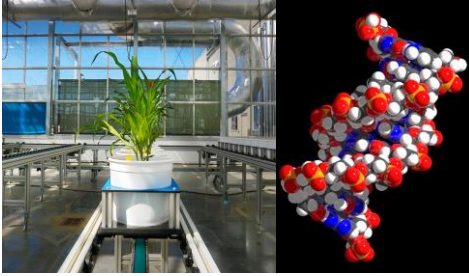


PhD Program in Complex Biosystems



The PhD program in Complex Biosystems is designed to prepare students for careers that integrate the data and life sciences and is directed toward students with interests in:

- Quantitative and computational approaches to understanding data
- Research and education in multiple life sciences disciplines
- Science across scales, from genes to ecosystems

In this Interdisciplinary program, graduate students participate in a full year of research rotations on diverse topics, with one semester of laboratory teaching experience.



In the first year of study, students consider “Big Questions” in the life sciences and learn current technical and analytical approaches to answering them.

Year 1 Core Curriculum

Biosystems Research Questions; Integrated Team-oriented Solutions; Statistics and Experimental Design; Presentation and Literature Critique; Teaching in LIFE 120/121 Labs; Research Rotations for two semesters.

Year 2 Specializations

Microbial Interactions; Integrated Plant Biology; Pathobiology and Biomedical Science; Systems Analysis; Computational Organismal Biology, Ecology, and Evolution

The program offers full support for first year students

<https://bigdata.unl.edu/phd-program>

